

Light wherever you need it

febi Light Portfolio



**SOLUTIONS
MADE IN GERMANY**

www.febi.com



bilsteingroup®

febi Truck - Your Specialist for Commercial Vehicle Replacement Parts

Ferdinand Bilstein is one of the world's leading suppliers and manufacturers of repair solutions for commercial vehicles and passenger cars. The company has been producing replacement parts for trucks, trailers, and buses under the febi brand for decades. Since 2020, articles for agricultural vehicles have also been gradually added to the range. Thanks to the extensive, dynamically growing product portfolio, febi is in a position to offer tailor-made solutions for every customer. The febi brand is firmly established in the Independent Automotive After-market (IAM) and, in the commercial vehicle sector, it has a leading market position in the core competencies of steering and suspension, braking, clutches, and engine thermal management.

febi currently offers you a selection of more than 3,200 replacement parts for agricultural vehicles, which is constantly being expanded. The range includes products suitable for all well-known manufacturers: John Deere, Case New Holland, Deutz - FAHR, Massey Ferguson, Fendt, Steyr, Claas, Kubota, Valtra, Landini and many more.



Steering
& Suspension



NVH



Wheel Fastening



Braking



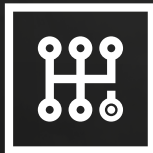
Chassis
Suspension



Pneumatics



Clutch



Drivetrain



Engine
Components



Fuel & Exhaust
System



Auxiliary
Belt Drive



Engine Thermal
Management



Air-Conditioning
& Heating



Engine
Management



Electrics



Chassis & Cabin



Filtration



Fluids



Specialist Tools



febiPLUS

Brochure Content

Work Lights	7 – 19
Beacons	20 – 30
Halogen Beacons	23 – 24
LED Beacons	25 – 28
Brackets for Beacons	29 – 30
Strobe Lights	31 – 33
Position, Side Marker and Number Plate Lights	34 – 42
Position Lights	34 – 38
Side Marker Lights	39
Accessories for Side Marker Lights	40
Number Plate Lamps	41




With the QR-Codes beside each article , you get to the product page in febi partsfinder. For Work Lights you find the diagram of the light beam with detailed meter and lumen data in the product pictures.

Vehicle Lighting and Light Signalling Regulations

Since 2005, new road traffic regulations have been in force in the EU for the entire vehicle lighting system. Among other things, all luminaires of the same kind must be mounted with equal strength, equal height and symmetrical to the middle when mounted in pairs. However, if a vehicle was built before 2005, the exception is that the lamps were already installed before the regulation came into effect.


If a lamp is approved according to the appropriate ECE regulation for a specific use on a vehicle it does not mean that it can be used for every purpose on every position. It may only be used as the lamp for which it is approved.

ECE R1	Vehicle headlamps	ECE R77	Parking lights, front and tail
ECE R3	Reflectors	ECE R87	Daytime running lights (DRL)
ECE R4	Rear license plate lighting	ECE R91	Side markers
ECE R6	Indicator front, tail and on the sides	ECE R98	Xenon headlamps
ECE R7	Position-, tail-, brake- and width marker lamp	ECE R112	Halogen and LED headlamps
ECE R10	Electromagnetic compatibility (EMC)	ECE R119	Cornering lamps
ECE R19	Fog lamps	ECE R123	Advanced Focus System, head light (AFS)
ECE R23	Reverse lamps	ECE R128	LED light sources
ECE R38	Rear fog lights	ECE R148	This Regulation combines the provisions of individual UN Regulations Nos. 4, 6, 7, 23, 38, 77, 87 and 91 into a single Regulation, and is the outcome of the World Forum for Harmonization of Vehicle Regulations (WP.29) decision to simplify the lighting and light-signalling regulations based on the initial proposal by the European Union and Japan.
ECE R48	Installation of lighting and light-signaling devices	SAE J595	Requirements for use on authorized emergency, maintenance, and service vehicles
ECE R65	Warning lights	CISPR 25	Radio disturbance chracteristics for the protection of receivers used on board vehicles, boats, and on devices - Limits and methods of measurement. It is devided into classes from 1 to 5. Class 5 fulfils the highest standards.



WEEE Compliant

The „Waste Electrical and Electronic Equipment“ Guideline 2012/19/EU regulates the distribution as well as the take-back and proper disposal of waste electrical and electronic equipment within the European currency area.



Approval for use on a dangerous goods vehicle.

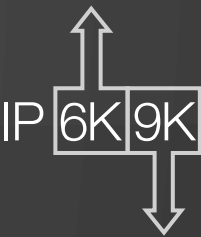


R23

IP-Classification

The IP classification (e.g. IP6K9K), specifies an internationally valid value according to ISO 20653 and DIN EN 60529, which defines the degree of protection provided by mechanical casings and electrical enclosures against intrusion, dust, accidental contact, and water.

First digit		Description	
ISO 20653	DIN EN 60529	Protection against foreign objects	Protection against contact
0		No protection	No protection
1		Protection against solid foreign objects with diameter ≥ 50 mm	Protection against access with back of hand
2		Protection against solid foreign objects with a diameter ≥ 12.5 mm	Protection against access with a finger
3		Protection against solid foreign objects with a diameter ≥ 2.5 mm	Protection against access with a tool
4		Protection against solid foreign objects with diameter ≥ 1.0 mm	Protection against access with a wire
5K	5	Protection against dust in harmful quantities	Complete protection against contact
6K	6	Dust-tight	Complete protection against contact



Second digit		Description	
ISO 20653	DIN EN 60529	Water Protection Classification	
0		No protection	
1		Protection against dripping water	
2		Protection against falling dripping water if the enclosure is inclined up to 15°	
3		Protection against falling spray water up to 60° from vertical	
4K	4	Protection against splashing water from all sides	
5		Protection against water jets (nozzle) from any angle	
6K	6	Protection against strong jets of water	
7		Protection against temporary submersion	
8		Protection against permanent submersion. Unless otherwise specified, protection is provided up to a water depth of 1 metre.	
9K	9	Protection against water during high-pressure/steam jet cleaning	

febi ProKit -

The Complete Solution for a Professional Repair

With ProKit, we offer an innovative product line which saves workshops time and money as febi ProKits are guaranteed to contain all the parts needed for the repair in question.

- ✓ With its ProKits for commercial vehicles, febi has established innovative, complete repair solutions for heavy-goods vehicles!
- ✓ Practicality-oriented, complete sets are perfectly tailored to specific repair requirements and contain all the necessary installation materials alongside the individual replacement parts.
- ✓ Additional trips to obtain replacements of items, such as corroded screws or nuts, therefore become a thing of the past.
- ✓ Saves workshops money as well as time.



3 Year Manufacturer Guarantee

febi exclusively offers its customers replacement parts in OE matching quality. As a specialist with manufacturing competence, we only offer products with a high degree of installation safety and durability. We rely on more than 175 years of experience in metalworking which we use every day in our own production.



As a specialist with manufacturing competence, febi only offers products with a high degree of installation safety and durability. In order to underline our high product quality standards, we are providing a 3 year manufacturer's guarantee for all of our replacement parts – exceeding the statutory warranty. This is our commitment to quality. This is a real added value for everyone who trusts in febi products - from wholesalers and workshops to car and commercial vehicle drivers.

febi Work Lights

Good visibility is extremely important for commercial vehicles or machines operating in the evening or at night. If there is insufficient lighting, vehicles and loads can be damaged and people could potentially get injured.

If there is an insufficiency of stationary light sources in the working area, necessary illumination can only be ensured with additional work lights on a vehicle.

You can rely on the wide selection of LED work lights from febi in OE matching quality. Thanks to modern, efficient LED technology, these achieve great luminous efficiency with comparatively low power consumption. This protects the vehicle battery and enables longer working hours with battery power.

All febi work lights meet the highest standards: they are 100% tested to ensure that each individual lamp delivers maximum performance.



Access to febi Work Lights video on **YouTube**

Work lights are commonly installed on commercial vehicles to give additional light for loading or reversing. They vary in size, power, brightness, shape, and design depending on their use. As long as there is an on/off switch, they can be mounted everywhere on the vehicle. There are versions with floodlight, as well as with spot light.

Please note: Only mount the working light in an upright position on the vehicle. Leave the cable hanging down with a loop on the headlight before guiding the cable to the cable junction boxes or collections. This is done as a means of preventing possible ingress of moisture and water along the cable.

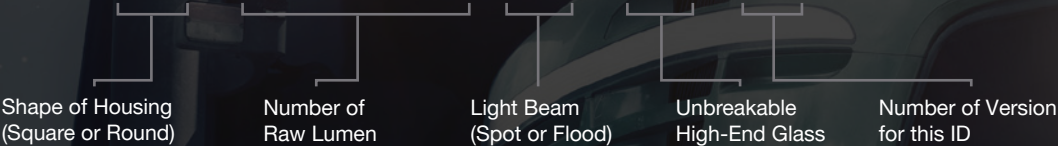


ECE R23

Finding the Right Light

Finding the right light is not always easy as they differ only slightly visually. The most important information is normally how bright the work light is and how the light beam is spread. You can find both information in the febi identification (ID) number:

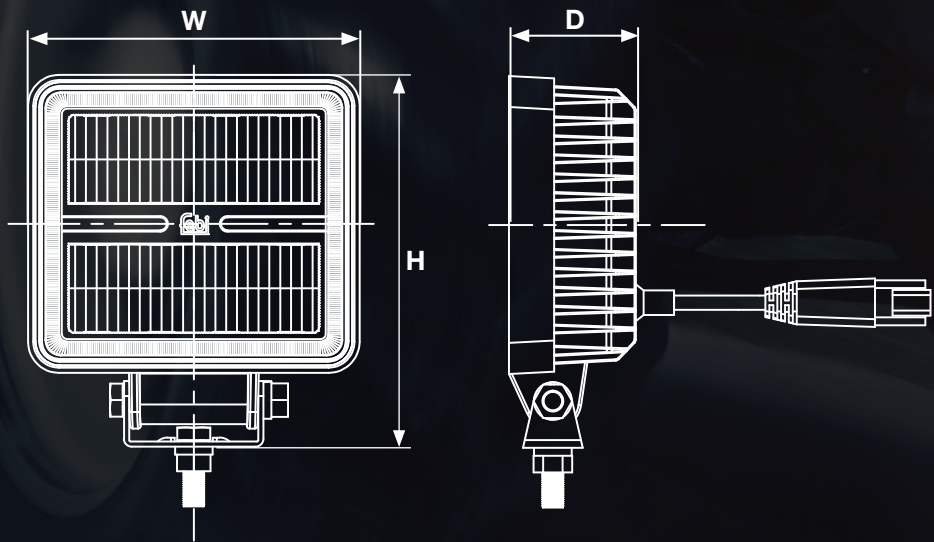
S-1100-F-H-2



Certain vehicle components are subject to regulations in the European Union including the vehicle lighting. These ECE regulations contain uniform, technical regulations which are relevant for the operating permit of the vehicle.

- Note:**
- Work lights can be installed as reversing light if they are certified according to the ECE R23.
 - It is mandatory to install a switch between the vehicle and the work light to comply with these regulations.

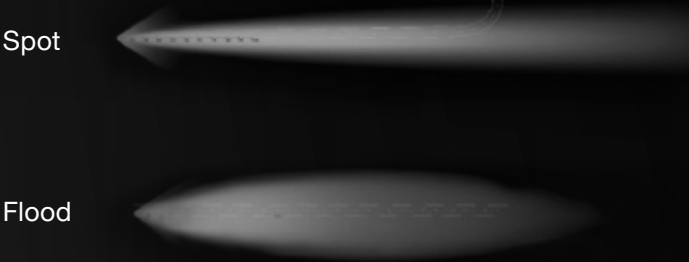
Product Dimensions



There are three dimensions used to measure work lights. These include width (W), height (H), and depth (D).

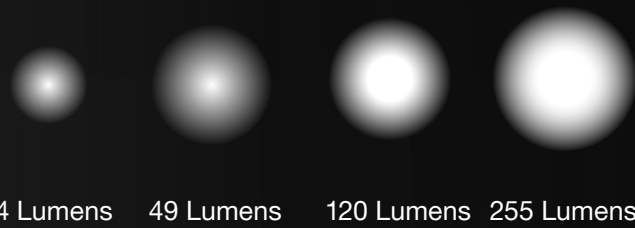
The Light Beam

The light beam of a driving light is controlled by the shape and form of the reflector or the glass. A spot beam gives a long and narrow light beam. A flood beam gives a light beam that is similar to the standard light beam, but it is longer and wider.



Lumen

Lumen is a common measurement which is used to compare the strength of the light emitted from a light source. It measures the flow of the light in every direction. It is measured as raw (out of laboratory) and as actual lumen (from the lamp itself).



Our Quality Solution

febi work lights are approved for the highest demands. They are 100 % inspected to ensure every single lamp can achieve maximum performance.



Water Spray Tester

The water spray tester simulates real environmental conditions for rain, spray mist, and water jets with increased pressure. Additional salt spray tests show the resistances of corrosion on materials and coating.



Water Tester

IP67 tested work lights survive the complete immersion in water for at least 30 minutes without being damaged. Additional high-temperature, water jets compatibility is necessary for the highest protecting rating IP6K9K, which mainly stands for maximum durability of a work lamp and complies with ISO 20653.

febi 104015

S-720-F-H



Raw Lumen	720lm
Dimension (W x H x D)	70 x 101 x 41
Voltage	12 - 36V
Beam	Flood
Watt	8W
IP Rating	IP6K9K
Working Temperature	-30° to +50°C
Material of Lens	PC
Material of Housing	Aluminium
Cable Length	0,28 m
Fulfills ECE Norm	R10
Approvals	EMC

febi 104000

S-1100-F



Raw Lumen	1100lm
Dimension (W x H x D)	108 x 135 x 40
Voltage	9 - 32V
Beam	Flood
Watt	15W
IP Rating	IP6K9K
Working Temperature	-40° to +60°C
Material of Lens	PC
Material of Housing	Aluminium
Cable Length	1,5 m
Fulfills ECE Norm	R10
Approvals	EMC

febi 104007

S-800-F



Raw Lumen	800lm
Dimension (W x H x D)	50 x 82 x 60
Voltage	9 - 32V
Beam	Flood
Watt	10W
IP Rating	IP6K9K
Working Temperature	-40° to +60°C
Material of Lens	PC
Material of Housing	Aluminium
Cable Length	1,5 m
Fulfills ECE Norm	R10
Approvals	EMC

febi 104004

R-1100-F



Raw Lumen	1100lm
Dimension (W x H x D)	115 x 135 x 36
Voltage	9 - 32V
Beam	Flood
Watt	15W
IP Rating	IP6K9K
Working Temperature	-40° to +60°C
Material of Lens	PC
Material of Housing	Aluminium
Cable Length	1,5 m
Fulfills ECE Norm	R10
Approvals	EMC

febi 104018

S-800-F-H



Raw Lumen	800lm
Dimension (W x H x D)	50 x 78 x 63
Voltage	12 - 32V
Beam	Flood
Watt	14W
IP Rating	IP6K9K
Working Temperature	-30° to +50°C
Material of Lens	PC
Material of Housing	Aluminium
Cable Length	0,28 m
Fulfills ECE Norm	R10
Approvals	EMC

febi 104009

S-1200-F



Raw Lumen	1200lm
Dimension (W x H x D)	122 x 99 x 78
Voltage	9 - 32V
Beam	Flood
Watt	12W
IP Rating	IP6K9K
Working Temperature	-40° to +60°C
Material of Lens	PC
Material of Housing	Aluminium
Cable Length	1,5 m
Fulfills ECE Norm	R10
Approvals	EMC

febi 104011

S-1200-F-2



Raw Lumen	1200lm
Dimension (W x H x D)	109 x 134 x 39
Voltage	10 - 30V
Beam	Flood
Watt	15W
IP Rating	IP67
Working Temperature	-40° to +60°C
Material of Lens	PC
Material of Housing	Aluminium
Cable Length	1,5 m
Fulfills ECE Norm	R10, R23
Approvals	EMC

febi 104001

S-1800-F



Raw Lumen	1800lm
Dimension (W x H x D)	160 x 47 x 64
Voltage	9 - 32V
Beam	Flood
Watt	18W
IP Rating	IP6K9K
Working Temperature	-40° to +60°C
Material of Lens	PC
Material of Housing	Aluminium
Cable Length	1,5 m
Fulfills ECE Norm	R10
Approvals	EMC

febi 104016

S-1440-F-H



Raw Lumen	1440lm
Dimension (W x H x D)	105 x 134 x 52
Voltage	9 - 36V
Beam	Flood
Watt	18W
IP Rating	IP6K9K
Working Temperature	-30° to +50°C
Material of Lens	PC
Material of Housing	Aluminium
Cable Length	0,28 m
Fulfills ECE Norm	R10, R23
Approvals	EMC

febi 172405

O-1800-F-DT



Connection Type	Deutsch Connector
Raw Lumen	1800lm
Dimension (W x H x D)	143 x 125 x 60
Voltage	9 - 32V
Beam	Flood
Watt	24W
IP Rating	IP6K9K
Working Temperature	-40° to +60°C
Material of Lens	PC
Material of Housing	Aluminium
Cable Length	0.05 m
Fulfills ECE Norm	R10
Approvals	EMC
* Fitting cable	177149, 177150

febi 104022

S-1440-F-H-2-ADR



Raw Lumen	1440lm
Dimension (W x H x D)	105 x 134 x 52
Voltage	9 - 36V
Beam	Flood
Watt	18W
IP Rating	IP6K9K
Working Temperature	-30° to +50°C
Material of Lens	PC
Material of Housing	Aluminium
Cable Length	0,28 m
Fulfills ECE Norm	R10, R23
Approvals	EMC,ADR

febi 171583

O-1800-F



Raw Lumen	1800lm
Dimension (W x H x D)	143 x 125 x 60
Voltage	9 - 32V
Beam	Flood
Watt	24W
IP Rating	IP6K9K
Working Temperature	-40° to +60°C
Material of Lens	PC
Material of Housing	Aluminium
Cable Length	1,5 m
Fulfills ECE Norm	R10
Approvals	EMC

febi 104012

S-2000-F



Raw Lumen	2000lm
Dimension (W x H x D)	109 x 134x 56
Voltage	10 - 30V
Beam	Flood
Watt	27W
IP Rating	IP67
Working Temperature	-40° to +50°C
Material of Lens	PC
Material of Housing	Aluminium
Cable Length	1,5 m
Fulfills ECE Norm	R10, R23
Approvals	EMC



febi 104020

S-2160-F-H-2



Raw Lumen	2160lm
Dimension (W x H x D)	123 x 142 x 58
Voltage	12 - 36V
Beam	Flood
Watt	8W
IP Rating	IP6K9K
Working Temperature	-30° to +50°C
Material of Lens	PC
Material of Housing	Aluminium
Cable Length	0,28 m
Fulfills ECE Norm	R10, R23
Approvals	EMC



febi 104014

S-2160-F-H



Raw Lumen	2160lm
Dimension (W x H x D)	125 x 150 x 60
Voltage	12 - 36V
Beam	Flood
Watt	22W
IP Rating	IP6K9K
Working Temperature	-30° to +50°C
Material of Lens	PC
Material of Housing	Aluminium
Cable Length	0,28 m
Fulfills ECE Norm	R10
Approvals	EMC



febi 104021

S-2160-F-H-3-ADR



Raw Lumen	2160lm
Dimension (W x H x D)	123 x 142 x 58
Voltage	12 - 36V
Beam	Flood
Watt	18W
IP Rating	IP6K9K
Working Temperature	-30° to +50°C
Material of Lens	PC
Material of Housing	Aluminium
Cable Length	0,28 m
Fulfills ECE Norm	R10, R23
Approvals	EMC, ADR



febi 104017

S-2160-S-H



Raw Lumen	2160lm
Dimension (W x H x D)	125 x 149 x 60
Voltage	12 - 36V
Beam	Spot
Watt	22W
IP Rating	IP6K9K
Working Temperature	-30° to +50°C
Material of Lens	PC
Material of Housing	Aluminium
Cable Length	0,28 m
Fulfills ECE Norm	R10
Approvals	EMC



febi 104023

S-2160-F-H-4



Raw Lumen	2160lm
Dimension (W x H x D)	125 x 220 x 73
Voltage	12 - 36V
Beam	Flood
Watt	22W
IP Rating	IP6K9K
Working Temperature	-30° to +50°C
Material of Lens	PC
Material of Housing	Aluminium
Cable Length	0,28 m
Fulfills ECE Norm	R10
Approvals	EMC
With an ON/OFF switch	



febi 104003

S-2200-F



Raw Lumen	2200lm
Dimension (W x H x D)	108 x 135 x 40
Voltage	9 - 32V
Beam	Flood
Watt	27W
IP Rating	IP6K9K
Working Temperature	-40° to +60°C
Material of Lens	PC
Material of Housing	Aluminium
Cable Length	1,5 m
Fulfills ECE Norm	R10
Approvals	EMC

febi 104005

R-2200-F



Raw Lumen	2200lm
Dimension (W x H x D)	115 x 135 x 36
Voltage	9 - 32V
Beam	Flood
Watt	27W
IP Rating	IP6K9K
Working Temperature	-40° to +60°C
Material of Lens	PC
Material of Housing	Aluminium
Cable Length	1,5 m
Fulfills ECE Norm	R10
Approvals	EMC

febi 104010

S-2500-F



Raw Lumen	2500lm
Dimension (W x H x D)	109 x 117 x 70
Voltage	9 - 32V
Beam	Flood
Watt	27W
IP Rating	IP6K9K
Working Temperature	-40° to +60°C
Material of Lens	PC
Material of Housing	Plastic
Cable Length	1,5 m
Fulfills ECE Norm	R10
Approvals	EMC

febi 173159

S-2500-F-DT



Connection Type	Deutsch-Connector
Raw Lumen	2500lm
Dimension (W x H x D)	115 x 145 x 49
Voltage	9 - 36V
Beam	Flood + Spot
Watt	24W
IP Rating	IP6K9K
Working Temperature	-40° to +60°C
Material of Lens	PC
Material of Housing	Aluminium
Cable Length	0,05 m
Fulfills ECE Norm	R148, R10
Approvals	EMC, ADR
* Fitting cable	177149, 177150

febi 104006

R-2700-F



Raw Lumen	2700lm
Dimension (W x H x D)	117 x 128 x 70
Voltage	9 - 32V
Beam	Flood
Watt	42W
IP Rating	IP6K9K
Working Temperature	-40° to +60°C
Material of Lens	PC
Material of Housing	Aluminium
Cable Length	1,5 m
Fulfills ECE Norm	R10
Approvals	EMC

febi 104002

S-3071-F



Raw Lumen	3071lm
Dimension (W x H x D)	110 x 126 x 72
Voltage	9 - 32V
Beam	Flood
Watt	48W
IP Rating	IP6K9K
Working Temperature	-40° to +60°C
Material of Lens	PC
Material of Housing	Aluminium
Cable Length	1,5 m
Fulfills ECE Norm	R10
Approvals	EMC

febi 104019

S-4800-F-H



Raw Lumen	4800lm
Dimension (W x H x D)	110 x 136 x 66
Voltage	12 - 36V
Beam	Flood
Watt	40W
IP Rating	IP6K9K
Working Temperature	-30° to +50°C
Material of Lens	PC
Material of Housing	Aluminium
Cable Length	0,28 m
Fulfills ECE Norm	R10
Approvals	EMC



febi 177149



Connection Type	Deutsch-Connector
Dimension (L)	2,0 m
Approval	ADR

Fits for all lamps with Deutsch-Connector



febi 177150



Connection Type	Deutsch-Connector
Dimension (L)	5,0 m
Approval	ADR

Fits for all lamps with Deutsch-Connector



Ensure Functionality Even in Darkness

with the multi applicable safety lamp from febi

In summer, due to heat and UV radiation, crop protection should only be applied after dusk or outside the main sunshine hours. But the darkness makes it difficult to monitor the function of the spray pattern. As a solution febi offers the safety lamp 172826, which can be attached to the boom of the field sprayer to make its spray mist visible. This allows the adjustment of the nozzles to be corrected if necessary and defective nozzles to be detected quickly. Functionality can be checked even in the dark and crop failure can be prevented.



febi 172826

O-10w-S



Dimension (W x H x D)	142 x 121 x 85
Voltage	9 - 64V
Beam	Spot
Watt	10W
IP Rating	IP6K9K
Working Temperature	-40° to +60°C
Material of Housing	Aluminium
Cable Length	1,5 m
Approvals	EMC
Colour	blue



Easily Visible From Any Angle: Beacons

Beacons are used in road traffic to warn of possible dangers, such as slow, larger trucks for example. They emit light in all directions so as to be clearly visible from any angle.

febi has beacons with three different mounting types in range:

- DIN connector
- Three bolt fixation open end
- Magnetic fixation, plug DIN 4165

Offering More

Beacons with a DIN connector or screw connection are suitable for fixed installation on the vehicle. Lights with a magnetic base can be attached to any vehicle without any additional bracket.

Furthermore, febi also offers matching holders and replacement lenses as accessories.



LED or Halogen?

febi offers beacons both with halogen lamps and LED lamps. The latter is ideal when a beacon with a very long service life, vibration resistance, and energy efficiency is required. However, if the light is rarely used or there is a risk that it will often be damaged and will have to be replaced frequently, the halogen version makes more sense.

The luminous intensity of the halogen and LED versions is similar and complies with all legal requirements.



The LED version is available in both a low and high design and can be used in the power range of 9 to 30 volts. The halogen version is supplied with a 12V and a 24V lamp, meaning it can be used in both voltage ranges.



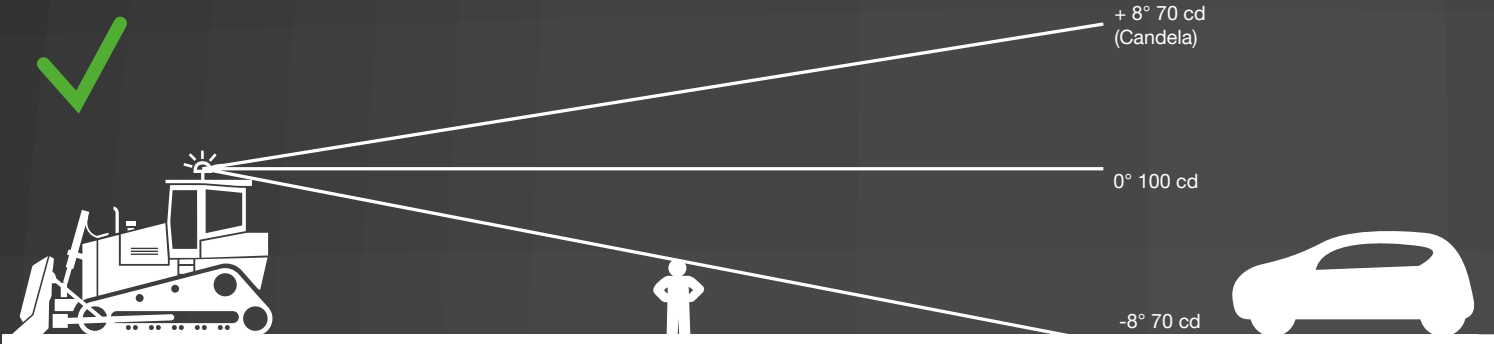
Did You Know?
Having 100% LED products on your vehicle could reduce your lighting carbon footprint by 80%.



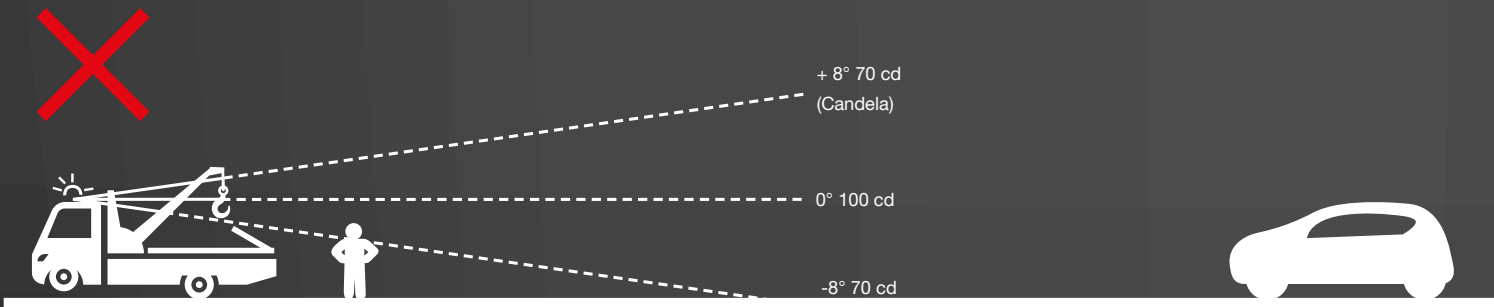
100% Bulbs
Halogen

LED 100%

Mounting on Vehicle and Light Distribution According to ECE R65



The beacon has to be visible from all directions without being blocked by any part of the vehicle.



In this scenario, only a single warning light is mounted on the roof of the vehicle. The crane blocks the light from being clearly seen on the rear side. The solution: an additional warning light should be mounted. This can either be placed at the rear or it can be mounted on the roof alongside the already existing light.

febi 104041



Connection Type	DIN Connector
Quantity of Blinking Patterns	1
Fastening Type	bolted / screwed
Dimension (W x H)	132 x 185 mm
Fulfills ECE Norm	R10, R65
Approval	EMC, ADR
Watt	55 W - 70 W
Lighting System	Halogen (H1)
Protection Type (IP Code)	IP67
Voltage	12 V / 24 V
Temperature Range	-30°C to +50°C



febi 104043



Connection Type	DIN flexible
Quantity of Blinking Patterns	1
Fastening Type	Clamping Screw
Dimension (W x H)	132 x 243 mm
Fulfills ECE Norm	R10, R65
Approval	EMC, ADR
Watt	55 W - 70 W
Lighting System	Halogen (H1)
Protection Type (IP Code)	IP67
Voltage	12 V / 24 V
Temperature Range	-30°C to +50°C



febi 104044



Quantity of Blinking Patterns	1
Fastening Type	bolted / screwed
Dimension (W x H)	132 x 199 mm
Cable Length	0,26 m
Fulfills ECE Norm	R10, R65
Approval	EMC, ADR
Watt	55 W - 70 W
Lighting System	Halogen (H1)
Protection Type (IP Code)	IP67
Voltage	12 V / 24 V
Temperature Range	-30°C to +50°C



febi 104045



Quantity of Blinking Patterns	1
Fastening Type	three-point fixing
Dimension (W x H)	144 x 166 mm
Cable Length	0,26 m
Fulfills ECE Norm	R10, R65
Approval	EMC, ADR
Watt	55 W - 70 W
Lighting System	Halogen (H1)
Protection Type (IP Code)	IP67
Voltage	12 V / 24 V
Temperature Range	-30°C to +50°C



febi 104048



Connection Type	DIN Connector
Quantity of Blinking Patterns	4
Fastening Type	bolted / screwed
Dimension (W x H)	132 x 185 mm
Fulfills ECE Norm	R10, R65 (rotation only)
Approval	EMC, ADR
Watt	12 W
Lighting System	LED
Protection Type (IP Code)	IP67
Voltage	9 - 30 V
Temperature Range	-30°C to +50°C



febi 104046



Quantity of Blinking Patterns	1
Fastening Type	Magnet Mount
Dimension (W x H)	144 x 166 mm
Cable Length	3,5 m
Fulfills ECE Norm	R10, R65
Approval	EMC, ADR
Watt	55 W - 70 W
Lighting System	Halogen (H1)
Protection Type (IP Code)	IP67
Voltage	12 V / 24 V
Plug / Socket Connector	on-board-voltage plug (DIN 4165)
Temperature Range	-30°C to +50°C



febi 104050



Connection Type	DIN flexible
Quantity of Blinking Patterns	4
Fastening Type	Clamping Screw
Dimension (W x H)	132 x 243 mm
Fulfills ECE Norm	R10, R65 (rotation only)
Approval	EMC , ADR
Watt	12 W
Lighting System	LED
Protection Type (IP Code)	IP67
Voltage	9 - 30 V
Temperature Range	-30°C to +50°C



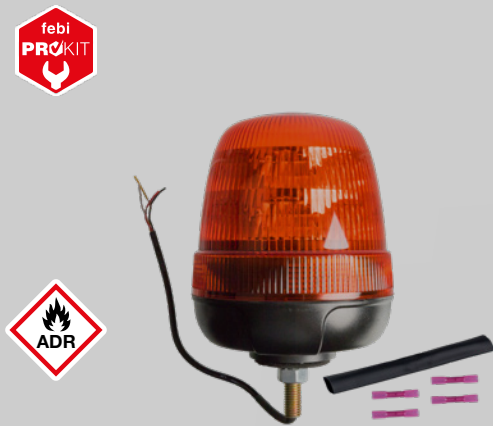
febi 104047



Quantity of Blinking Patterns	1
Fastening Type	Magnet Mount
Dimension (W x H)	132 x 177 mm
Cable Length	3,5 m
Fulfills ECE Norm	R10, R65
Approval	EMC, ADR
Watt	55 W - 70 W
Lighting System	Halogen (H1)
Protection Type (IP Code)	IP67
Voltage	12 V / 24 V
Plug / Socket Connector	on-board-voltage plug (DIN 4165)
Temperature Range	-30°C to +50°C



febi 104051



Quantity of Blinking Patterns	4
Fastening Type	bolted / screwed
Dimension (W x H)	132 x 199 mm
Cable Length	0,26 m
Fulfills ECE Norm	R10, R65 (rotation only)
Approval	EMC, ADR
Watt	12 W
Lighting System	LED
Protection Type (IP Code)	IP67
Voltage	9 - 30 V
Temperature Range	-30°C to +50°C



febi 104052



Quantity of Blinking Patterns	4
Fastening Type	three-point fixing
Dimension (W x H)	144 x 166 mm
Cable Length	0,26 m
Fulfills ECE Norm	R10, R65 (rotation only)
Approval	EMC, ADR
Watt	12 W
Lighting System	LED
Protection Type (IP Code)	IP67
Voltage	9 - 30 V
Temperature Range	-30°C to +50°C



febi 104055



Connection Type	DIN Connector
Quantity of Blinking Patterns	4
Fastening Type	bolted / screwed
Dimension (W x H)	122 x 98 mm
Fulfills ECE Norm	R10, R65 (rotation only)
Approval	EMC, ADR
Watt	12 W
Lighting System	LED
Protection Type (IP Code)	IP67
Voltage	9 - 30 V
Temperature Range	-30°C to +50°C



febi 104053



Quantity of Blinking Patterns	4
Fastening Type	Magnet Mount
Dimension (W x H)	144 x 166 mm
Cable Length	3,5 m
Fulfills ECE Norm	R10, R65 (rotation only)
Approval	EMC, ADR
Watt	12 W
Lighting System	LED
Protection Type (IP Code)	IP67
Voltage	9 - 30 V
Plug / Socket Connector	on-board-voltage plug (DIN 4165)
Temperature Range	-30°C to +50°C



febi 104057



Connection Type	DIN flexible
Quantity of Blinking Patterns	4
Fastening Type	Clamping Screw
Dimension (W x H)	122 x 156 mm
Fulfills ECE Norm	R10, R65 (rotation only)
Approval	EMC, ADR
Watt	12 W
Lighting System	LED
Protection Type (IP Code)	IP67
Voltage	9 - 30 V
Temperature Range	-30°C to +50°C



febi 104054



Quantity of Blinking Patterns	4
Fastening Type	Magnet Mount
Dimension (W x H)	132 x 177 mm
Cable Length	3,5 m
Fulfills ECE Norm	R10, R65 (rotation only)
Approval	EMC, ADR
Watt	12 W
Lighting System	LED
Protection Type (IP Code)	IP67
Voltage	9 - 30 V
Plug / Socket Connector	on-board-voltage plug (DIN 4165)
Temperature Range	-30°C to +50°C



febi 104058



Quantity of Blinking Patterns	4
Fastening Type	bolted / screwed
Dimension (W x H)	122 x 111 mm
Cable Length	0,26 m
Fulfills ECE Norm	R10, R65 (rotation only)
Approval	EMC, ADR
Watt	12 W
Lighting System	LED
Protection Type (IP Code)	IP67
Voltage	9 - 30 V
Temperature Range	-30°C to +50°C



febi 104059



Quantity of Blinking Patterns	4
Fastening Type	three-point fixing
Dimension (W x H)	140 x 71 mm
Cable Length	0,26 m
Fulfills ECE Norm	R10, R65 (rotation only)
Approval	EMC, ADR
Watt	12 W
Lighting System	LED
Protection Type (IP Code)	IP67
Voltage	9 - 30 V
Temperature Range	-30°C to +50°C



febi 104060



Quantity of Blinking Patterns	4
Fastening Type	Magnet Mount
Dimension (W x H)	91 x 140 mm
Cable Length	3,5 m
Fulfills ECE Norm	R10, R65 (rotation only)
Approval	EMC, ADR
Watt	12 W
Lighting System	LED
Protection Type (IP Code)	IP67
Voltage	9 - 30 V
Plug / Socket Connector	on-board-voltage plug (DIN 4165)
Temperature Range	-30°C to +50°C



febi 104061



Quantity of Blinking Patterns	4
Fastening Type	Magnet Mount
Dimension (W x H)	140 x 91 mm
Cable Length	3,5 m
Fulfills ECE Norm	R10, R65 (rotation only)
Approval	EMC, ADR
Watt	12 W
Lighting System	LED
Protection Type (IP Code)	IP67
Voltage	9 - 30 V
Temperature Range	-30°C to +50°C



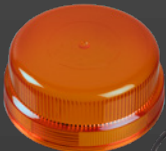
Replacement Glass for Beacons

In addition to our broad range of beacons, we also have the corresponding replacement glasses in our assortment - in proven OE matching quality, of course.

We offer two different versions - flat and high. This covers all beacons in the febi program.

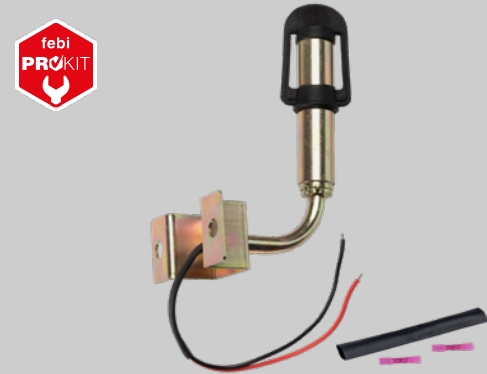


febi 104039
high version



febi 104038
flat version

febi 104028



Connection Type	DIN Connector
Fastening Type	two-point fastening
Dimension (W x H)	102 x 160 mm
DIN - ISO	72591



febi 104029



Connection Type	DIN Connector
Fastening Type	three-point fastening
Dimension (W x H)	95 x 115 mm
DIN - ISO	72591



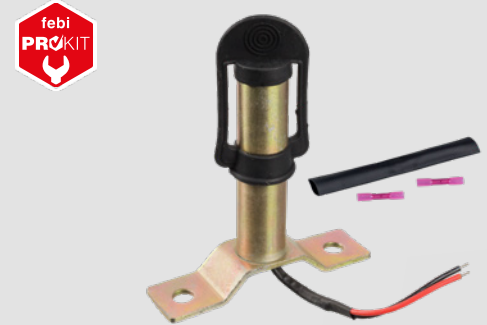
febi 104030



Connection Type	DIN Connector
Fastening Type	bolted / screwed
Dimension (W x H)	24 x 102 mm
DIN - ISO	72591



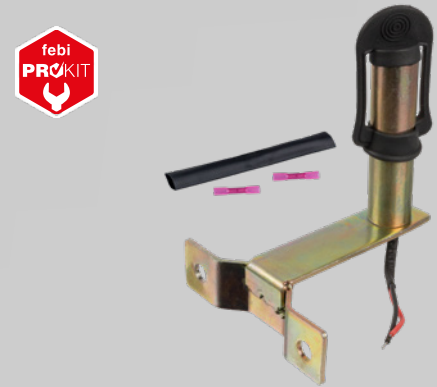
febi 104031



Connection Type	DIN Connector
Fastening Type	two-point fastening
Dimension (W x H)	113 x 120 mm
DIN - ISO	72591



febi 104032

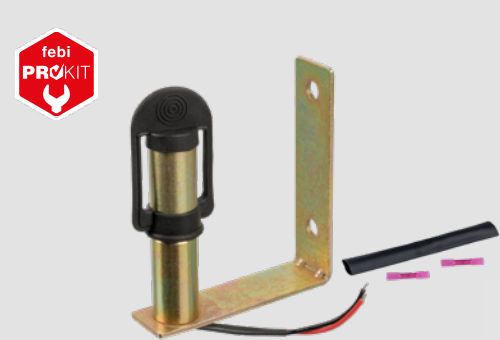


Connection Type
Fastening Type
Dimension (W x H)
DIN - ISO

DIN Connector
two-point fastening
113 x 137 mm
72591



febi 104033



Connection Type
Fastening Type
Dimension (W x H)
DIN - ISO

DIN Connector
two-point fastening
109 x 121 mm
72591



febi 104036

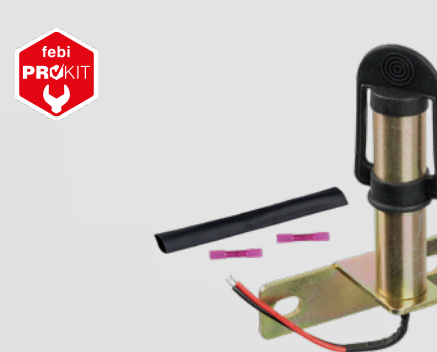


Connection Type
Fastening Type
Dimension (W x H)
DIN - ISO

DIN Connector
two-point fastening
117 x 102 mm
72591



febi 104037



Connection Type
Fastening Type
Dimension (W x H)
DIN - ISO

DIN Connector
two-point fastening
95,2 x 135 mm
72591



Perfect Warning Effect: Strobe Lights

Strobe lights are mounted horizontally or vertically onto the vehicle front in order to achieve an ideal warning effect for other road users.

febi supplies the lights as a ProKit with the necessary fixing material, crimp connectors, and shrink tubing for a professional and durable electrical connection. IP rating IP67 ensures continuous protection against dust and splash water. The strobe lights can be used in combination with other strobe lights to flash synchronously or alternately. All strobe lights offered by febi are suitable for a power range of 9 to 30 volts.



febi 109256



Quantity of Blinking Patterns	11
Dimension	94 x 32 x 11 mm
Cable Length	1,5 m
Fulfills ECE Norm	R10
Approval	EMC, SAE J595
Watt	9 W
Protection Type (IP Code)	IP67
Voltage	9 - 30 V
Temperature Range	-40°C to +65°C
Colour	orange (amber)



febi 109260



Quantity of Blinking Patterns	11
Dimension	88.4 x 28 x 17.2 mm
Cable Length	1,5 m
Fulfills ECE Norm	R10
Approval	EMC, SAE J595
Watt	9 W
Protection Type (IP Code)	IP67
Voltage	9 - 30 V
Temperature Range	-40°C to +65°C
Colour	orange (amber)



febi 109257



Quantity of Blinking Patterns	19
Dimension	109.9 x 32 x 11 mm
Cable Length	1,5 m
Fulfills ECE Norm	R10, R65
Approval	EMC, SAE J595
Watt	12 W
Protection Type (IP Code)	IP67
Voltage	9 - 30 V
Temperature Range	-40°C to +65°C
Colour	orange (amber)



febi 109261



Quantity of Blinking Patterns	19
Dimension	104.4 x 28 x 17.2 mm
Cable Length	1,5 m
Fulfills ECE Norm	R10, R65
Approval	EMC, SAE J595
Watt	12 W
Protection Type (IP Code)	IP67
Voltage	9 - 30 V
Temperature Range	-40°C to +65°C
Colour	orange (amber)



febi 109258



Quantity of Blinking Patterns	19
Dimension	121.6 x 32 x 11 mm
Cable Length	1,5 m
Fulfills ECE Norm	R10, R65
Approval	EMC, SAE J595
Watt	18 W
Protection Type (IP Code)	IP67
Voltage	9 - 30 V
Temperature Range	-40°C to +65°C
Colour	orange (amber)



febi 109262



Quantity of Blinking Patterns	19
Dimension	132.7 x 28 x 17.2 mm
Cable Length	1,5 m
Fulfills ECE Norm	R10, R65
Approval	EMC, SAE J595
Watt	18 W
Protection Type (IP Code)	IP67
Voltage	9 - 30 V
Temperature Range	-40°C to +65°C
Colour	orange (amber)



febi 109259



Quantity of Blinking Patterns	19
Dimension	121.6 x 43.5 x 11 mm
Cable Length	1,5 m
Fulfills ECE Norm	R10, R65
Approval	EMC, SAE J595
Watt	36 W
Protection Type (IP Code)	IP67
Voltage	9 - 30 V
Temperature Range	-40°C to +65°C
Colour	orange (amber)



febi 109263



Quantity of Blinking Patterns	19
Dimension	131.2 x 46.8 x 17.2 mm
Cable Length	1,5 m
Fulfills ECE Norm	R10, R65
Approval	EMC, SAE J595
Watt	36 W
Protection Type (IP Code)	IP67
Voltage	9 - 30 V
Temperature Range	-40°C to +65°C
Colour	orange (amber)



Position, Side Marker and Number Plate Lights

- » Maintenance-free LEDs for a long life
- » All common approvals for the different applications
- » Simple connection and installation
- » Large selection for common vehicle types, LCV, trailers, semi-trailers and trucks.
- » Long cable for trouble-free installation
- » The closure cap is always included.



Did You Know?

febi offers all universal position, side marker and number plate lights with P&R connectors.

P&R System - Press & Ready System

The P&R wiring system is a contact option characterised by quick and uncomplicated installation on the vehicle. These lights can be mounted in a 2-wire flat cable at any desired location. Thanks to a silicone single-wire seal, they are absolutely waterproof and may also be used in the transport of dangerous goods (ADR).

febi 173960



Lighting System	LED
Fitting Side	left
Connection Type	PRS
Dimension (W)	181 mm
Distance between Mounting Holes	78 mm
Cable Length	0,5 m
Fulfills ECE Norm	R7, R91
Protection Type (IP Code)	IP67
Voltage	12 - 24 V



febi 173961



Lighting System	LED
Fitting Side	right
Connection Type	PRS
Dimension (W)	181 mm
Distance between Mounting Holes	78 mm
Cable Length	0,5 m
Fulfills ECE Norm	R7, R91
Protection Type (IP Code)	IP67
Voltage	12 - 24 V



febi 173962



Lighting System	LED
Fitting Side	left
Connection Type	PRS
Dimension (W)	182 mm
Distance between Mounting Holes	78 mm
Cable Length	0,5 m
Fulfills ECE Norm	R7, R91
Protection Type (IP Code)	IP67
Voltage	12 - 24 V



febi 173963



Lighting System	LED
Fitting Side	right
Connection Type	PRS
Dimension (W)	182 mm
Distance between Mounting Holes	78 mm
Cable Length	0,5 m
Fulfills ECE Norm	R7, R91
Protection Type (IP Code)	IP67
Voltage	12 - 24 V



febi 173964



Lighting System	LED
Fitting Side	left
Connection Type	PRS
Dimension (W)	173 mm
Distance between Mounting Holes	78 mm
Cable Length	0,5 m
Fulfills ECE Norm	R7, R10, R91
Protection Type (IP Code)	IP67
Voltage	12 - 24 V



febi 173965



Lighting System	LED
Fitting Side	right
Connection Type	PRS
Dimension (W)	173 mm
Distance between Mounting Holes	78 mm
Cable Length	0,5 m
Fulfills ECE Norm	R7, R10, R91
Protection Type (IP Code)	IP67
Voltage	12 - 24 V



febi 173966



Lighting System	LED
Fitting Side	left + right
Connection Type	PRS
Dimension (W)	129 mm
Distance between Mounting Holes	78 mm
Cable Length	0,5 m
Fulfills ECE Norm	R7, R10, R91
Protection Type (IP Code)	IP67
Voltage	12 - 24 V



febi 173968



Lighting System	LED
Colour	red
Connection Type	PRS
Dimension (W x H x D)	130 x 32 x 15 mm
Distance between Mounting Holes	116 mm
Cable Length	0,5 m
Fulfills ECE Norm	R3, R7
Protection Type (IP Code)	IP67
Voltage	12 - 24 V



febi 173971



Lighting System	LED
Fitting Side	red
Connection Type	PRS
Dimension (W x H x D)	130 x 32 x14 mm
Distance between Mounting Holes	116 mm
Cable Length	0,5 m
Fulfills ECE Norm	R7, R10, R91
Protection Type (IP Code)	IP67
Voltage	12 - 24 V



febi 173974



Lighting System	LED
Fitting Side	red
Connection Type	PRS
Dimension (W x H x D)	102 x 45 x14 mm
Distance between Mounting Holes	84 mm
Cable Length	0,5 m
Fulfills ECE Norm	R3, R7, R10
Protection Type (IP Code)	IP67
Voltage	12 - 24 V



febi 173978



Lighting System	LED
Colour	red
Connection Type	PRS
Dimension (W x H x D)	111 x 50 x 24 mm
Distance between Mounting Holes	90 mm
Cable Length	0,5 m
Fulfills ECE Norm	R3, R7
Protection Type (IP Code)	IP67
Voltage	12 - 24 V



febi 173969



Lighting System	LED
Colour	white
Connection Type	PRS
Dimension (W x H x D)	130 x 32 x 15 mm
Distance between Mounting Holes	116 mm
Cable Length	0,5 m
Fulfills ECE Norm	R3, R7
Protection Type (IP Code)	IP67
Voltage	12 - 24 V



febi 173972



Lighting System	LED
Colour	white
Connection Type	PRS
Dimension (W x H x D)	130 x 32 x 14 mm
Distance between Mounting Holes	116 mm
Cable Length	0,5 m
Fulfills ECE Norm	R3, R7, R10
Protection Type (IP Code)	IP67
Voltage	12 - 24 V



febi 173973



Lighting System	LED
Colour	white
Connection Type	PRS
Dimension (W x H x D)	102 x 32 x 15 mm
Distance between Mounting Holes	84 mm
Cable Length	0,5 m
Fulfills ECE Norm	R3, R7 , R10
Protection Type (IP Code)	IP67
Voltage	12 - 24 V



febi 173977



Lighting System	LED
Colour	white
Connection Type	PRS
Dimension (W x H x D)	111 x 50 x 24 mm
Distance between Mounting Holes	90 mm
Cable Length	0,5 m
Fulfills ECE Norm	R3, R7
Protection Type (IP Code)	IP67
Voltage	12 - 24 V



febi 173967



Lighting System	LED
Colour	orange (amber)
Connection Type	PRS
Dimension (W x H x D)	130 x 32 x15 mm
Distance between Mounting Holes	116 mm
Cable Length	0,5 m
Fulfills ECE Norm	R3, R91
Protection Type (IP Code)	IP67
Voltage	12 - 24 V



febi 173970



Lighting System	LED
Colour	orange (amber)
Connection Type	PRS
Dimension (W x H x D)	130 x 32 x 14 mm
Distance between Mounting Holes	116 mm
Cable Length	0,5 m
Fulfills ECE Norm	R3, R91
Protection Type (IP Code)	IP67
Voltage	12 - 24 V



febi 173975



Lighting System	LED
Colour	orange (amber)
Connection Type	PRS
Dimension (W x H x D)	102 x 45 x 14 mm
Distance between Mounting Holes	84 mm
Cable Length	0,5 m
Fulfills ECE Norm	R3, R10, R91
Protection Type (IP Code)	IP67
Voltage	12 - 24 V



febi 173976

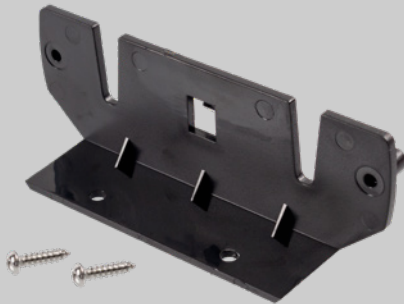


Lighting System	LED
Colour	orange (amber)
Connection Type	PRS
Dimension (W x H x D)	111 x 50 x 24 mm
Distance between Mounting Holes	90 mm
Cable Length	0,5 m
Fulfills ECE Norm	R3, R91
Protection Type (IP Code)	IP67
Voltage	12 - 24 V



For all our Position- and Sidemarkers we offer the fitting Brackets

febi 173980



Dimension (W x H x D) 130 x 46 x 41 mm
Distance between Mounting Holes 116 mm
Material Plastic



febi 173979



Dimension (W x H x D) 99 x 72 x 22 mm
Distance between Mounting Holes 50 mm, 84 mm
Material Plastic



febi 173981



Dimension (W x H x D) 109 x 69 x 22 mm
Distance between Mounting Holes 90 mm
Material Plastic



febi 173958



Lighting System LED
Connection Type PRS
Dimension (W x H x D) 53 x 80 x 59 mm
Cable Length 0,5 m
Fulfills ECE Norm R4, R10
Approvals SAE, EMC
Protection Type (IP Code) IP67
Voltage 12 - 24 V



febi 173959



Lighting System LED
Connection Type PRS
Dimension (W x H x D) 90 x 31 x 46 mm
Cable Length 0,5 m
Fulfills ECE Norm R4, R10
Approvals EMC
Protection Type (IP Code) IP67
Voltage 12 - 24 V



febi 171948



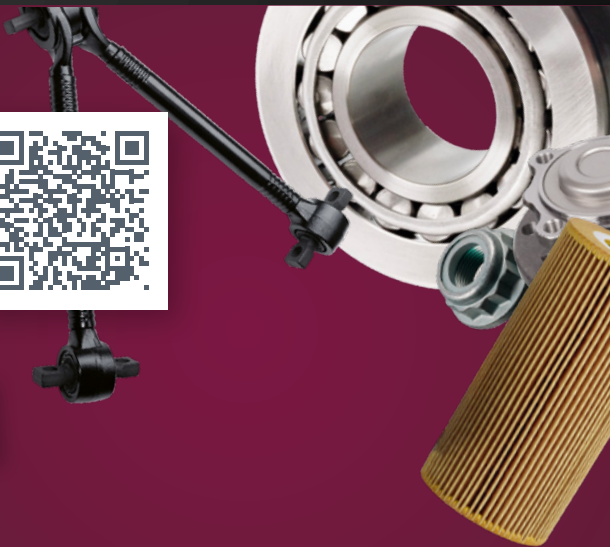
Lighting System LED
Connection Type PRS
Dimension (W x H x D) 632 x 146 x 58 mm
Cable Length 0,5 m
Approvals R4
Protection Type (IP Code) IP67
Voltage 24 V



bilsteingroup®
partsfinder

Register now for free

partsfinder.bilsteingroup.com





Ferdinand Bilstein GmbH + Co. KG

Wilhelmstraße 47 · 58256 Ennepetal · Germany

Tel. +49 2333 911-0

info@bilsteingroup.com · www.febi.com